

Eames Plastic Chair

Charles & Ray Eames, 1950

vitra.



Eames Plastic Chair

The Eames Plastic Chairs are renewed versions of the legendary Fiberglass Chair. As the very first industrially produced plastic chair, it was originally developed by the Eameses in collaboration with Zenith Plastics for the 'Low-Cost Furniture Design' competition organised by the Museum of Modern Art. In the current versions made of polypropylene, these chairs provide even greater comfort.

The wide selection of bases makes it possible to use the chairs in a variety of settings: from the dining room or home office to the garden. Different colours and upholstery versions provide many options for combining individual chairs to meet various needs.

In 2015, Vitra adapted the seat geometry and height of the Eames Plastic Chairs to today's requirements and also expanded the selection of colours with six new shades.

The Eames Plastic Armchair is complemented by the Eames Plastic Side Chair without armrests.



Charles & Ray Eames

Charles and Ray Eames are counted among the most important figures of twentieth-century design. Their work spans the fields of furniture design, filmmaking, photography and exhibition design. Vitra is the sole authorised manufacturer of Eames products for

Europe and the Middle East. When you own an Eames product made by Vitra, you know it is an original.

1 Eames Plastic Armchair
2-8 Areas of use
9 Cover materials

10-11 Eames Plastic Chair – Colours
12-13 Eames Plastic Chair – Bases
14-15 Dimensions

16 Surfaces and colours



Dining at home – or eating out

With their new seat height, the Eames Plastic Chairs are even better suited for use in combination with contemporary dining tables. At home as well as in restaurants and cafeterias, the many configuration options make it possible to find just the right chair for any furnishing scheme or interior environment.

Materials DAW

- **Base:** wooden base in various shades of maple or honey-toned ash, stained and lacquered finish. Steel rod cross struts in basic dark. (DAW = Dining Height Armchair Wood Base)

Materials DSW

- **Base:** non-stackable wooden base in various shades of maple or honey-toned ash, stained and lacquered finish. Steel rod cross struts in basic dark. (DSW = Dining Height Side Chair Wood Base)

Materials DAR

- **Base:** wire base with cross struts, chrome-plated or powder-coated finish. The powder-coated version is suitable for outdoor use. (DAR = Dining Height Armchair Rod Base)

Materials DSR

- **Base:** non-stacking four-legged wire base with cross struts. The powder-coated version is suitable for outdoor use. (DSR = Dining Height Side Chair Rod Base)

Materials DAX

- **Base:** four-legged tubular steel base, chrome-plated or powder-coated in basic dark. The powder-coated version is suitable for outdoor use. (DAX = Dining Height Armchair X-Base)

Materials DSX

- **Base:** non-stacking four-legged tubular steel base. The powder-coated version is suitable for outdoor use. (DSX = Dining Height Side Chair X-Base)
- **Note:** special additives retard the fading of colours due to UV radiation. However, if the chair is exposed to sunlight for prolonged periods, the colour may change over time. We recommend limited exposure to sunlight.



DAW



DSW



DAR



DSR



DAX



DSX



Outdoor

Versions of the Eames Plastic Chair with non-upholstered seat shells and powder-coated bases are also suited for use in outdoor settings. They not only provide a striking visual accent on terraces and balconies but also make it possible to enjoy the chair's exceptional comfort under the open sky.

Materials DAR

- **Base:** wire base with cross struts, chrome-plated or powder-coated finish. The powder-coated version is suitable for outdoor use. (DAR = Dining Height Armchair Rod Base)

Materials DSR

- **Base:** non-stacking four-legged wire base with cross struts. The powder-coated version is suitable for outdoor use. (DSR = Dining Height Side Chair Rod Base)

Materials DAX

- **Base:** four-legged tubular steel base, chrome-plated or powder-coated in basic dark. The powder-coated version is suitable for outdoor use. (DAX = Dining Height Armchair X-Base)

Materials DSX

- **Base:** non-stacking four-legged tubular steel base. The powder-coated version is suitable for outdoor use. (DSX = Dining Height Side Chair X-Base)
- **Note:** special additives retard the fading of colours due to UV radiation. However, if the chair is exposed to sunlight for prolonged periods, the colour may change over time. We recommend limited exposure to sunlight.



DSR



DAR



DSX



DAX



Living

The rocking chair RAR (Rocking Armchair Rod Base) and the elegant DAL (Dining Armchair La Fonda Base) are expressive solitary pieces that cut a fine figure in a wide range of interior environments.

Materials RAR

- **RAR base:** wire base with cross struts, solid maple runners. (RAR = Rocking Armchair Rod Base)
- **Range of use:** recommended for residential use only.

Materials DAL

- **Base:** La Fonda base in polished die-cast aluminium. (DAL = Dining Height Armchair La Fonda Base)



RAR



DAL



Home office and studio

The PACC and PSCC versions feature a height-adjustable five-star base on castors with both spring and swivel functions. The chairs offer pleasant comfort in office environments where work tasks require shorter periods of sitting.

Materials PACC

- **Base:** five-star base in polished die-cast aluminium with double castors in basic dark. (PACC = Pivot Armchair Cast Base on Castors)

Materials PSCC

- **Base:** five-star base in polished die-cast aluminium with double castors in basic dark. (PSCC = Pivot Side Chair Cast Base on Castors)



PACC

PSCC



Multipurpose seating

As flexible seating solutions in auditoriums, conference facilities, media rooms, assembly halls and similar spaces, the Eames Plastic Chairs have proven their worth over decades of use: the models DSS and DSS-N can be stacked, and DSS can also be linked in rows.

Materials DSS

- **Base:** chrome-plated tubular steel base, DSS with ganging bracket. (DSS = Dining Height Side Chair Stacking Base)
- **Stacking:** Version without upholstery can be stacked up to 8 chairs on the floor or on a stacking trolley. Version with seat and full upholstery: up to 5 chairs can be stacked on the floor, up to 6 chairs on a stacking trolley.

Materials DSS-N

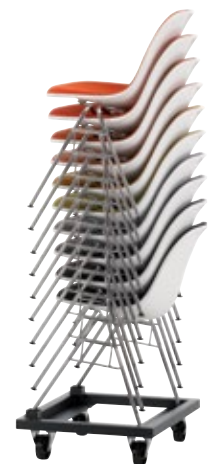
- **Base:** chrome-plated tubular steel base, DSS-N without ganging brackets. (DSS-N = Dining Height Side Chair Stacking Base Non-Link)
- **Stacking:** Version without upholstery can be stacked up to 8 chairs on the floor or on a stacking trolley. Version with seat and full upholstery: up to 5 chairs can be stacked on the floor, up to 6 chairs on a stacking trolley.



DSS-N



DSS, row with ganging brackets



Stacking trolley

Stacking trolley

The practical stacking trolley facilitates the quick set-up and storage of chairs used for temporary functions.



Ganging brackets

With the ganging brackets, the chairs can be easily hooked together to keep them in their intended place.



Row and seat numbers

The models DSS and DSS-N can be labelled with a row number as well as a seat number.





Waiting areas

Beam supports in different lengths are available for the Eames Plastic Chairs, accommodating two to five seat shells. Thanks to the robust seat shells and the indestructible base construction, these configurations are suited for all types of waiting areas including those subject to intense use.

Materials Eames Plastic Chair on beam

- **Table unit:** black solid core material (560 x 430 mm).
- **Base:** two-legged beam support in different lengths accommodates 2 to 5 chair shells or table units. T-beam: epoxy-coated in basic dark, polished aluminium legs. Fitted with plastic glides for carpet or anti-skid felt glides for hard floors.



Eames Plastic Side Chair on beam



Eames Plastic Armchair on beam



Hopsak

100 % polyamide | 550 g/m²

Hopsak is an expressive flat-woven textile made of polyamide. The duotone colours offer a multitude of design possibilities in high-contrast, brightly hued or subtle combinations of warp and weft threads. Hopsak is a durable and robust fabric that can be used in private interiors as well as public areas. It is available in 28 different colours.



CARE INSTRUCTIONS

Cover fabrics

To care for cover fabrics, vacuum regularly with an upholstery nozzle to remove dust and lint. Fresh spots and spills can usually be removed by blotting immediately with an absorbent, lint-free sponge or cloth. To prevent remaining traces of a ring mark, work from the edge of the spot towards the centre.

To avoid mineral residue from remaining on dark fabrics after drying, we recommend the use of household-grade distilled water for dampening. Stubborn stains can be treated by brushing dry stains lightly with a soft brush (for example, a clothes brush). Depending on the type of stain, the use of solvents may be necessary. In such cases, it is essential to consult a professional cleaner. Under no circumstances should cover fabrics be rubbed vigorously. Please be sure to consult a specialist before using any solvent-based cleaning product.

Plastics

Vitra plastics are very robust, with excellent shape retention and colourfastness, making them resistant to a variety of chemicals and other substances. Furthermore, special additives retard the fading of colours due to UV radiation. However, the exposure of a chair to sunlight for prolonged periods may cause the colour to change over time. For this reason, limited exposure to sunlight is advisable. Please use a soft, damp, non-abrasive cloth to clean plastic surfaces and dry gently. For stain removal, we recommend the use of a mild, commercially available cleaning agent. Always avoid abrasive cleaning agents including powders and pastes as well as aggressive 'all-purpose' cleaners containing alcohol, which will damage the surface.

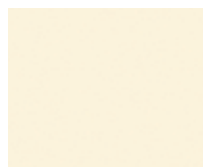


In collaboration with the Dutch designer Hella Jongerius, Vitra has developed a broad palette of colours for seat shells and upholstery materials, allowing an endless number of combinations to suit any interior.

Shell colours



04
white



30
cream



23
ice grey



94
moss grey



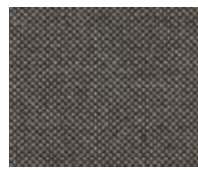
73
navy blue



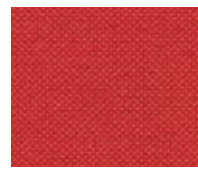
21
ocean



Suggested upholstery colours



80
warmgrey/moor brown



65
coral/poppy red



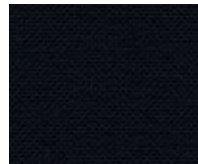
81
ice blue/ivory



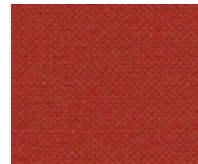
71
yellow/pastel green



69
grass-green/ivory



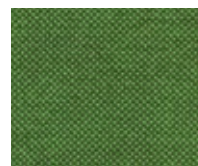
66
nero



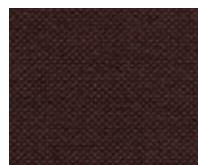
96
red/cognac



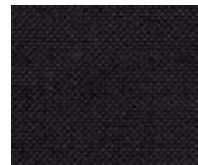
85
mint/ivory



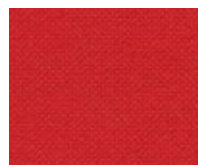
70
grass green/forest



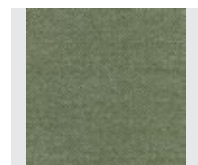
76
marron/moor brown



78
nero/moor brown



63
red/poppy red



87
ivory/forest

Shell colours



93
classic green



34
mustard



03
poppy red



28
classic red



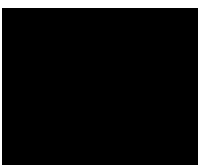
89
oxide red



25
mauve grey



35
basalt



01
basic dark



Suggested upholstery colours



77
nero/forest



70
grass green/forest



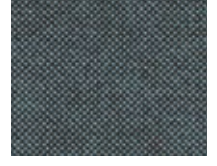
69
grass-green/ivory



73
petrol/moor brown



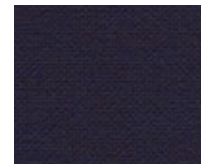
83
blue/ivory



82
ice blue/moor brown



84
blue/moor brown



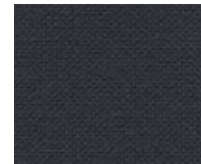
75
dark blue/moor brown



05
dark grey



74
dark blue/ivory



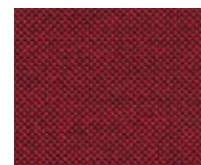
68
pink/poppy red



67
poppy red/ivory



72
yellow/poppy red



62
red/moor brown



79
warmgrey/ivory



88
cognac/ivory



86
mint/forest



DAR & DSR



DAW & DSW



DAX & DSX

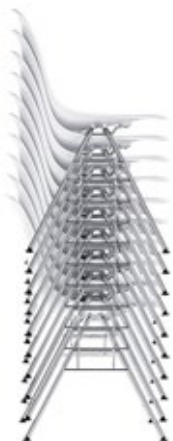


DAL

RAR

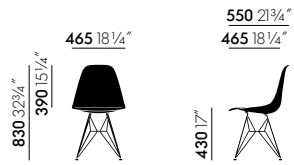


PSCC & PACC

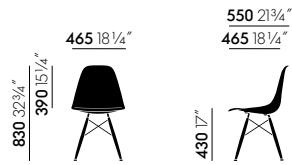


DSS & DSS-N

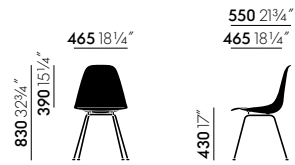
Eames Plastic Chair on beam



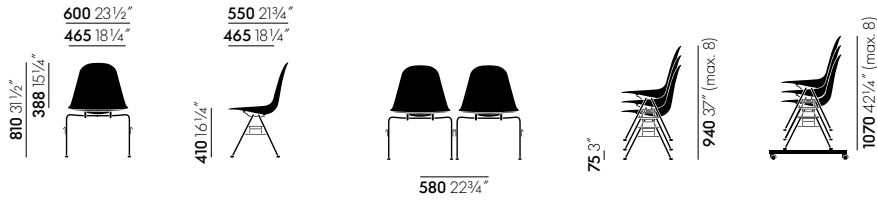
DSR



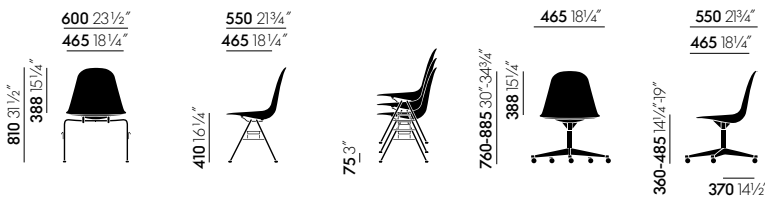
DSW



DSX

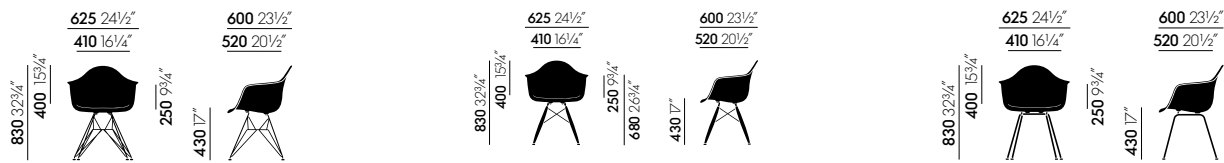


DSS

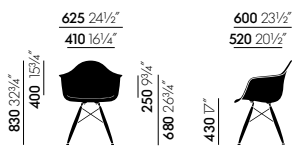


DSS-N

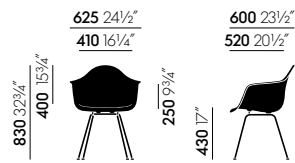
PSCC



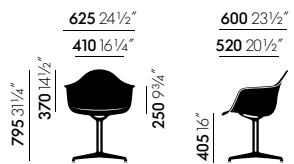
DAR



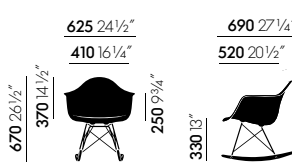
DAW



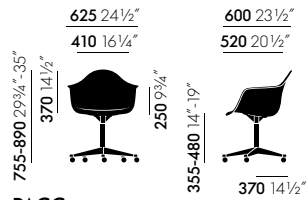
DAX



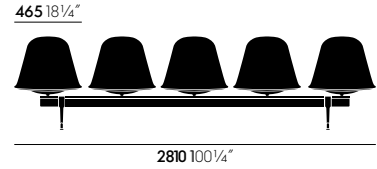
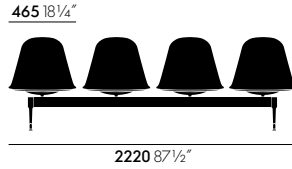
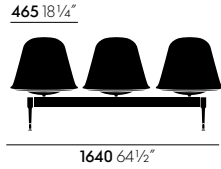
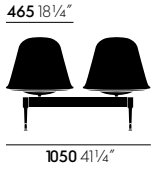
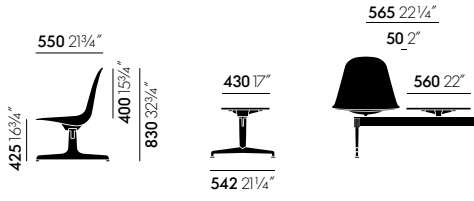
DAL



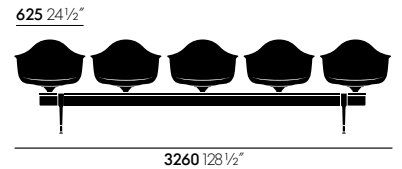
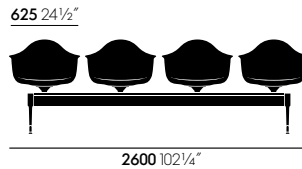
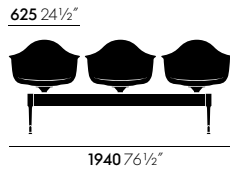
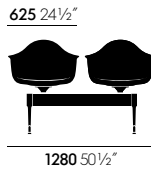
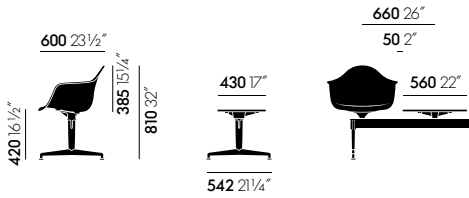
RAR



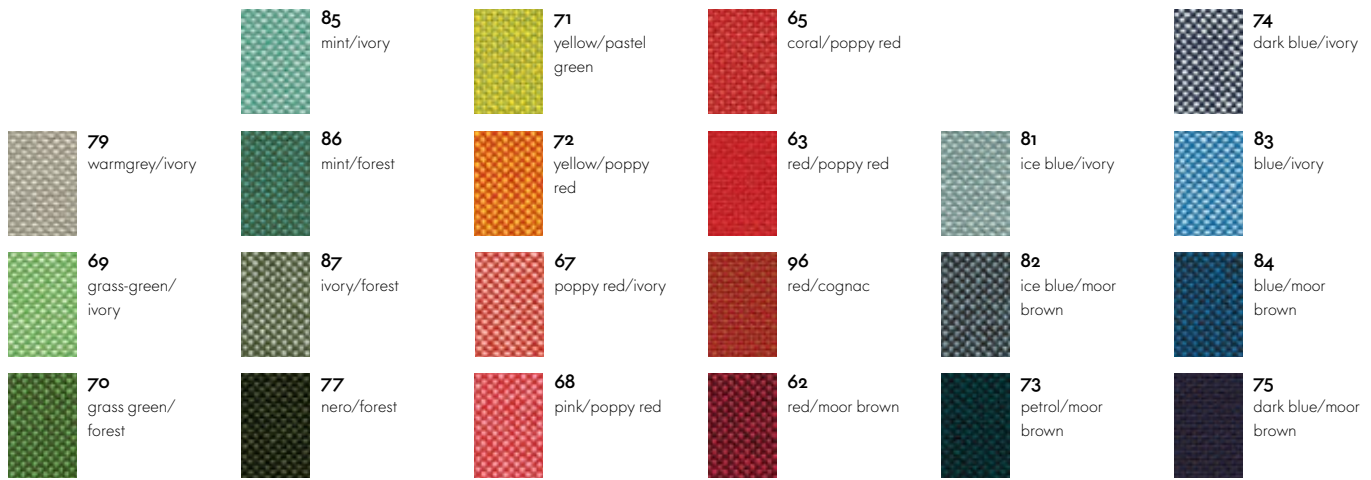
PACC



Eames Plastic Side Chair on beam



Eames Plastic Armchair on beam



Hopsak

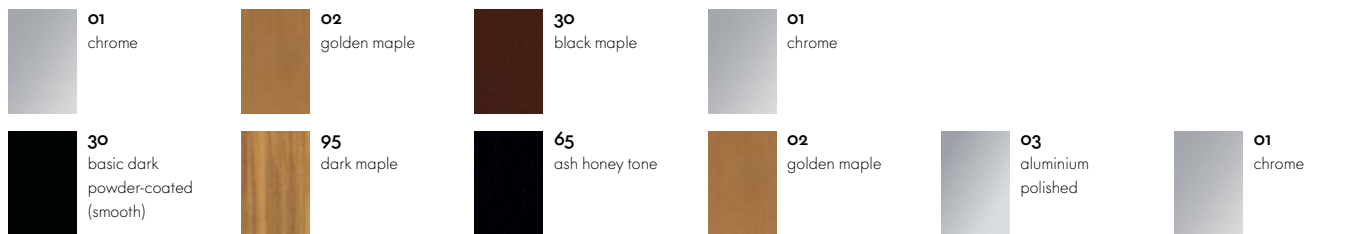


Hopsak

Seat shell

Piping

BASES



DAR, DAX, DSR, DSX

DSW, DAW

RAR

DAL, PACC, PSCC

DSS, DSS-N

