



Eva

A new generation
'light touch' task chair.

orangebox



➔ EVA-HBAH

Product Description

Responsible, innovative and beautiful, eva represents the most efficient and effective combination of materials and design thinking we've ever put into a task chair.

Workplace design can play a significant role in improving employee health, happiness and productivity, and can hold the key to attracting and retaining a talented workforce. The workplace is constantly changing, and with fewer dedicated workstations and more shared collaborative workspaces the way we work is evolving from sitting in one chair at a desk all day every day to working across multiple locations in shorter bursts. At the same time, the demographics of the office environment are broader than ever before.

Our latest task chair, eva, upholds our commitment to lead by example in environmentally responsible product design and manufacture, while placing a

greater emphasis on user experience and comfort. In fact, we let the chair make many of the adjustments itself: a self-weighting mechanism intelligently responds to the user's weight, automatically providing the right amount of resistance as they recline in the chair. No adjustment necessary.

The optional travel limiter means the chair can be locked in the upright position, or, for a more personalised set up, be set at three different angles of recline. Refining the chair to just a few controls has allowed us to focus on maximising the range of adjustment it offers, and as a result, eva caters for a larger percentage of user demographic, reducing the need for specialist occupational health chairs.

Product Specification

➔ Standard Product Description

Castors/Glides: Black, 65mm hard tyre, free-wheel castors on task chairs. 65mm black glides as an option.

Gas Lift: Gas lift is colour matched to base except on counter height chairs when it is brushed Chrome only, fitted with footring.

Mechanism: Synchronous weight balancing movement with up to 20° recline.

Back Yoke: Die-cast Aluminium. Aluminium trim (yoke & arm supports) available in Industrial Silver, Black or White.

Seat: Injection moulded polypropylene available in black or white. Integrated seat height & depth controls. 76mm seat depth adjustment.

Seat Cushion: Combustion modified high resilient (CMHR) moulded foam. Panelled top-stitched fabric upholstery (twin-needled on leather and vinyl).

Arms: Die-cast aluminium & injection moulded nylon arms with soft-touch TPU armpads. 100mm height adjustment & rotating armpads. Soft touch armpads available in black only.

Base: Industrial Silver. Textured Black or White at no additional cost.

Trim: Industrial Silver. Textured Black or White at no additional cost.

Backrest Frame: Injection moulded nylon available in black or white.

Mesh: Knitted polyester with integrated lumbar (passes BS EN 1335-1 & BS EN ISO 9241). Available in Carbon or Ash.

Headrest: Rear headrest colour matched to backrest frame & upholstery fabric matched to the seat.

➔ Optional Upcharges

Castor: 65mm black soft-tyre castor.

Mechanism: Travel limiter (3 position travel limiter & back lock in the upright position).

Trim: Polished aluminium trim (back yoke & arm supports).

Base: Polished aluminium base.

Adjustable Lumbar: Height (80mm) & depth (20mm) adjustable with air lumbar pad. Colour matched to plastic trim.

Coathanger: Colour matched to plastic trim.



➔ EVA-HBA

Product Range

EVA-HB
Task chair



H1040 [H41] W690 [W27]
D690 [D27] SD460 [SD18]
SH450-455 [SH18]

EVA-HBA
Task armchair



H1040 [H41] W690 [W27]
D690 [D27] SD460 [SD18]
SH450-455 [SH18]

EVA-HBH
Task chair with headrest



H1200 [H47] W690 [W27]
D690 [D27] SD460 [SD18]
SH450-455 [SH18]

EVA-HBAH
Task armchair with headrest



H1200 [H47] W690 [W27]
D690 [D27] SD460 [SD18]
SH450-455 [SH18]

EVA-HBC
Counter height chair



H1250 [H49] W690 [W27]
D690 [D27] SD460 [SD18]
SH450-455 [SH18]

EVA-HBCA
Counter height armchair



H1250 [H49] W690 [W27]
D690 [D27] SD460 [SD18]
SH450-455 [SH18]

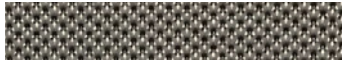
mm[*]



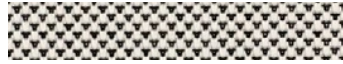
➔ EVA-HBA

Finishes

→ Mesh



Carbon



Ash

→ Metal



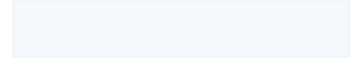
Polished



Black



Industrial Silver



White



→ Detail: EVA-HBA